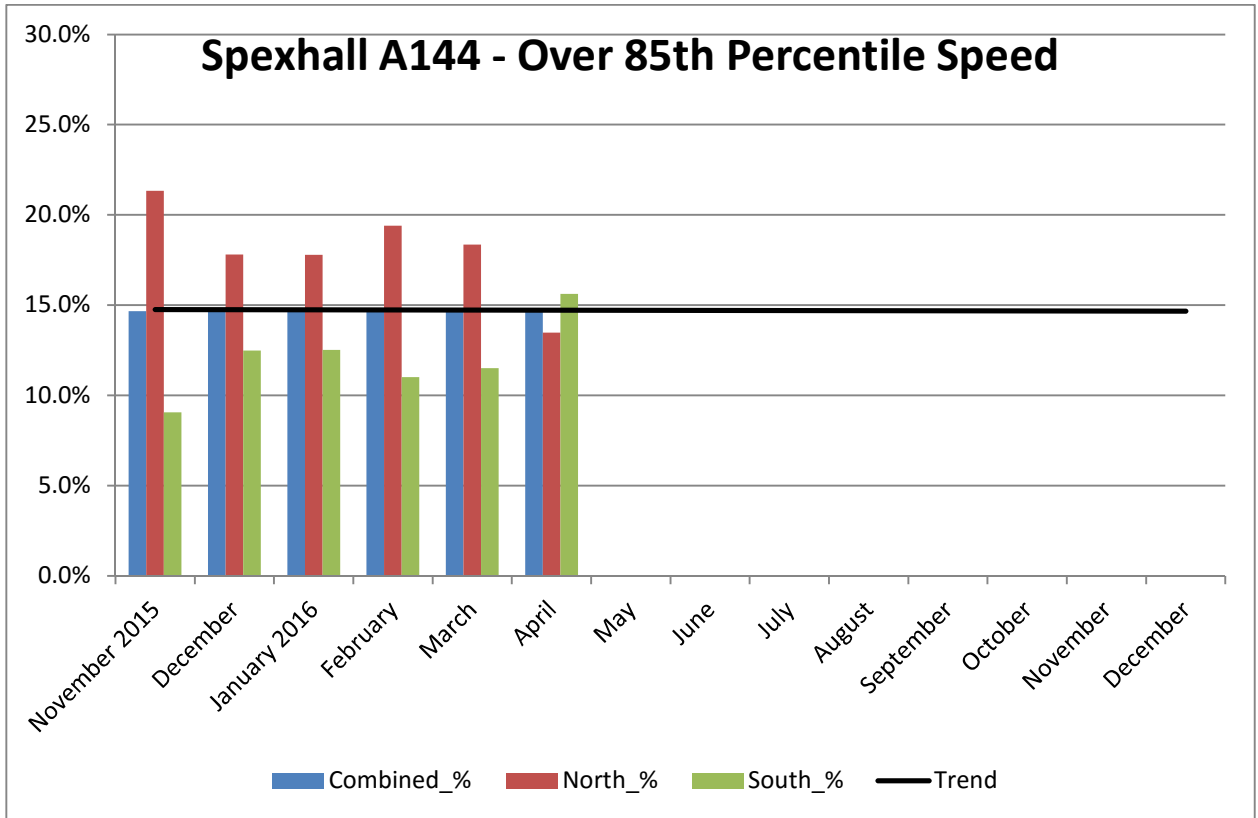
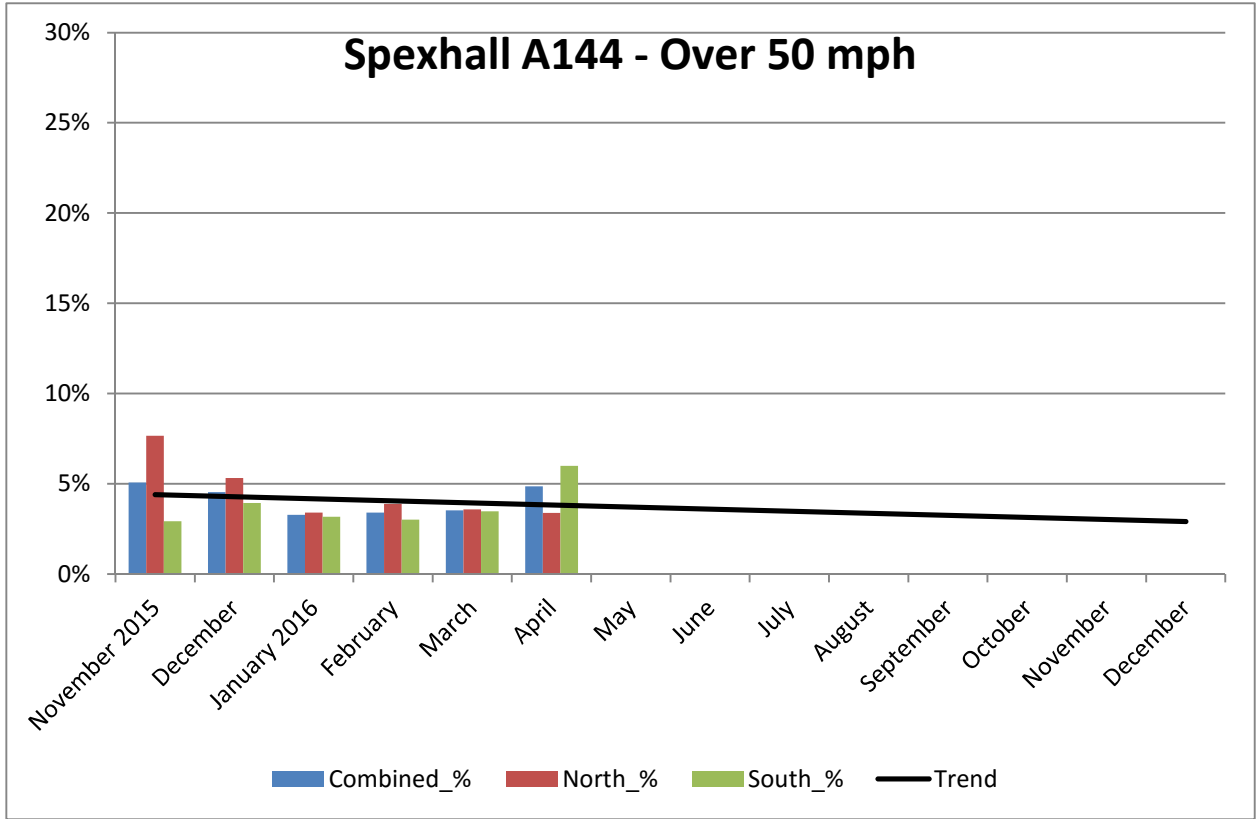


COMMUNITY SPEED WATCH

APRIL 2016	A144 Spexhall, Stone Street		
	Combined	Northbound	Southbound
Vehicles per Day (average) Weekday	5646	2502	3144
Vehicles per Day (average) Weekend	3573	1626	1947
85 th Percentile Speed	42		
% Vehicles Over 50 mph	4.9	3.4	6.0
% Vehicles Over 85 th Percentile	14.7	13.5	15.6
% Vehicles At or Over ACPO (35 mph)	36.2	36.2	36.1
% Over Speed Limit (30mph)	67.8	67.8	67.6

Recommended Periods for Speed Enforcement	OVER 35mph	Northbound	Southbound
Based on highest number of offending drivers each hour Average number of offending drivers for the month was 1,808 (36.2%) PER DAY	Mondays	4 to 5pm	7 to 8am
	Tuesdays	4 to 5pm	5 to 6pm
	Wednesdays	4 to 5pm	7 to 8am
	Thursdays	5 to 6pm	8 to 9am
	Fridays	4 to 5pm	8 to 9am
	Saturdays	11 to Noon	6 to 7pm
	Sundays	4 to 5pm	5 to 6pm

COMMUNITY SPEED WATCH



COMMUNITY SPEED WATCH

