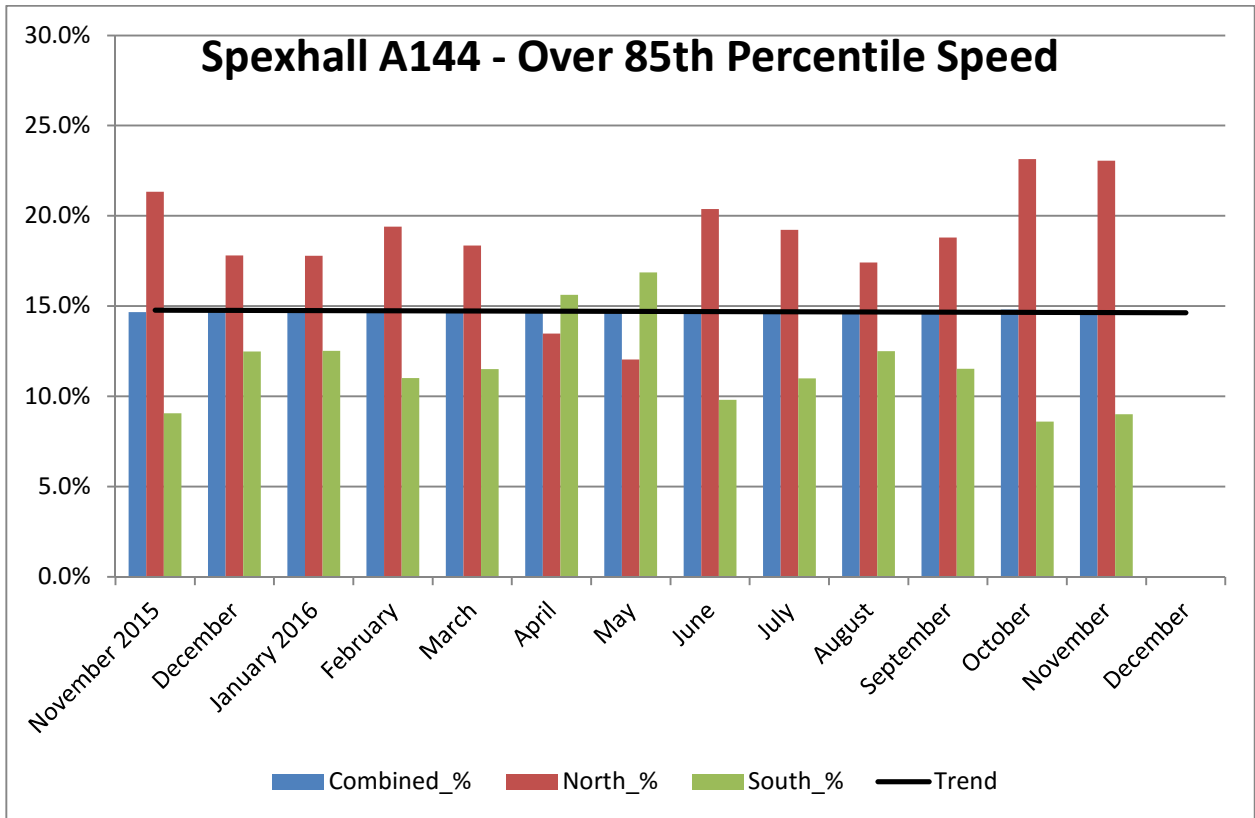
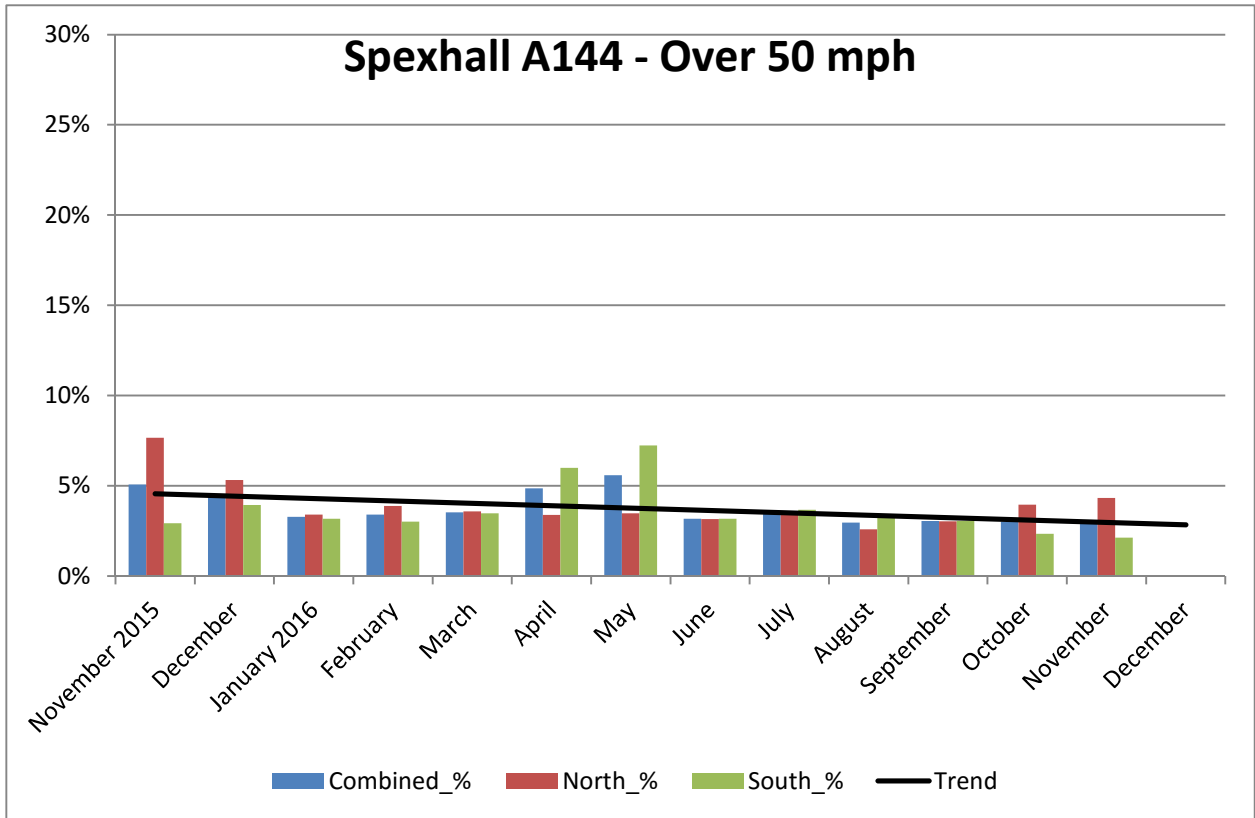


COMMUNITY SPEED WATCH

NOVEMBER 2016	A144 Spexhall, Stone Street		
	Combined	Northbound	Southbound
Vehicles per Day (average) - Weekday	4594	1786	2808
Vehicles per Day (average) - Weekend	2821	1099	1722
85 th Percentile Speed	39		
% Vehicles Over 50 mph	3.0	4.3	2.1
% Vehicles Over 85 th Percentile	14.5	23.1	9.0
% Vehicles At or Over ACPO (35 mph)	23.8	37.8	14.8
% Over Speed Limit (30mph)	51.4	72.8	37.3

Recommended Periods for Speed Enforcement	OVER 35mph	Northbound	Southbound
Based on highest number of offending drivers each hour Average number of offending drivers for the month was 968 (23.8%) PER DAY	Mondays	3 to 4pm	7 to 8am
	Tuesdays	8 to 9am	7 to 8am
	Wednesdays	3 to 4pm	7 to 8am
	Thursdays	8 to 9am	7 to 8am
	Fridays	7 to 8am	7 to 8pm
	Saturdays	1 to 2pm	7 to 8am
	Sundays	12 to 1pm	3 to 4pm

COMMUNITY SPEED WATCH



COMMUNITY SPEED WATCH

