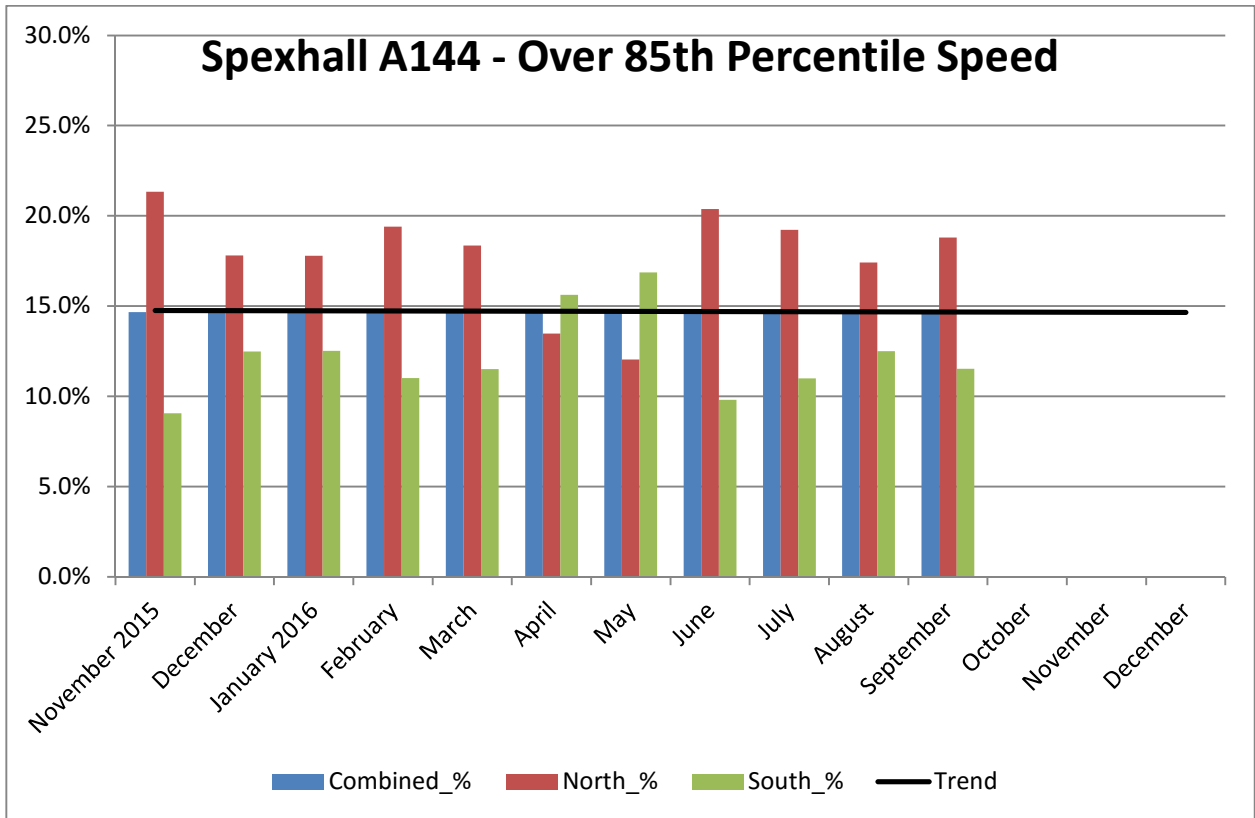
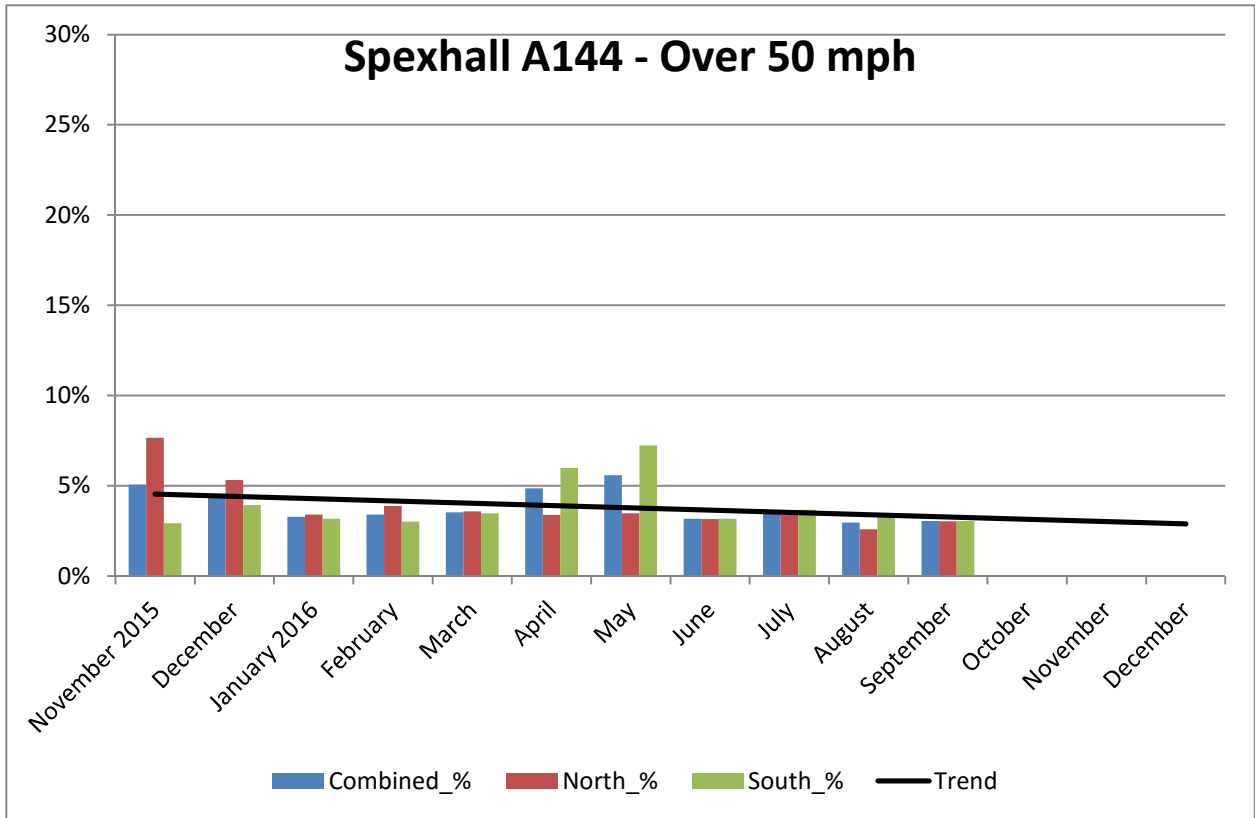


COMMUNITY SPEED WATCH

| SEPTEMBER 2016 | A144 Spexhall, Stone Street | | |
|---|-----------------------------|------------|------------|
| | Combined | Northbound | Southbound |
| Vehicles per Day (average) - Weekday | 5216 | 2278 | 2938 |
| Vehicles per Day (average) - Weekend | 3662 | 1630 | 2032 |
| 85 th Percentile Speed | 39 | | |
| % Vehicles Over 50 mph | 3.0 | 3.0 | 3.0 |
| % Vehicles Over 85 th Percentile | 14.8 | 18.8 | 11.5 |
| % Vehicles At or Over ACPO (35 mph) | 25.9 | 34.1 | 19.4 |
| % Over Speed Limit (30mph) | 57.8 | 72.6 | 46.0 |

| Recommended Periods for Speed Enforcement | OVER 35mph | Northbound | Southbound |
|---|-------------------|------------|------------|
| Based on highest number of offending drivers each hour Average number of offending drivers for the month was 1,231 (25.9%) PER DAY | Mondays | 5 to 6pm | 4 to 5pm |
| | Tuesdays | 4 to 5pm | 7 to 8am |
| | Wednesdays | 5 to 6pm | 7 to 8am |
| | Thursdays | 8 to 9am | 7 to 8am |
| | Fridays | 5 to 6pm | 7 to 8pm |
| | Saturdays | 10 to 11am | 5 to 6pm |
| | Sundays | 10 to 11am | 10 to 11am |

COMMUNITY SPEED WATCH



COMMUNITY SPEED WATCH

