

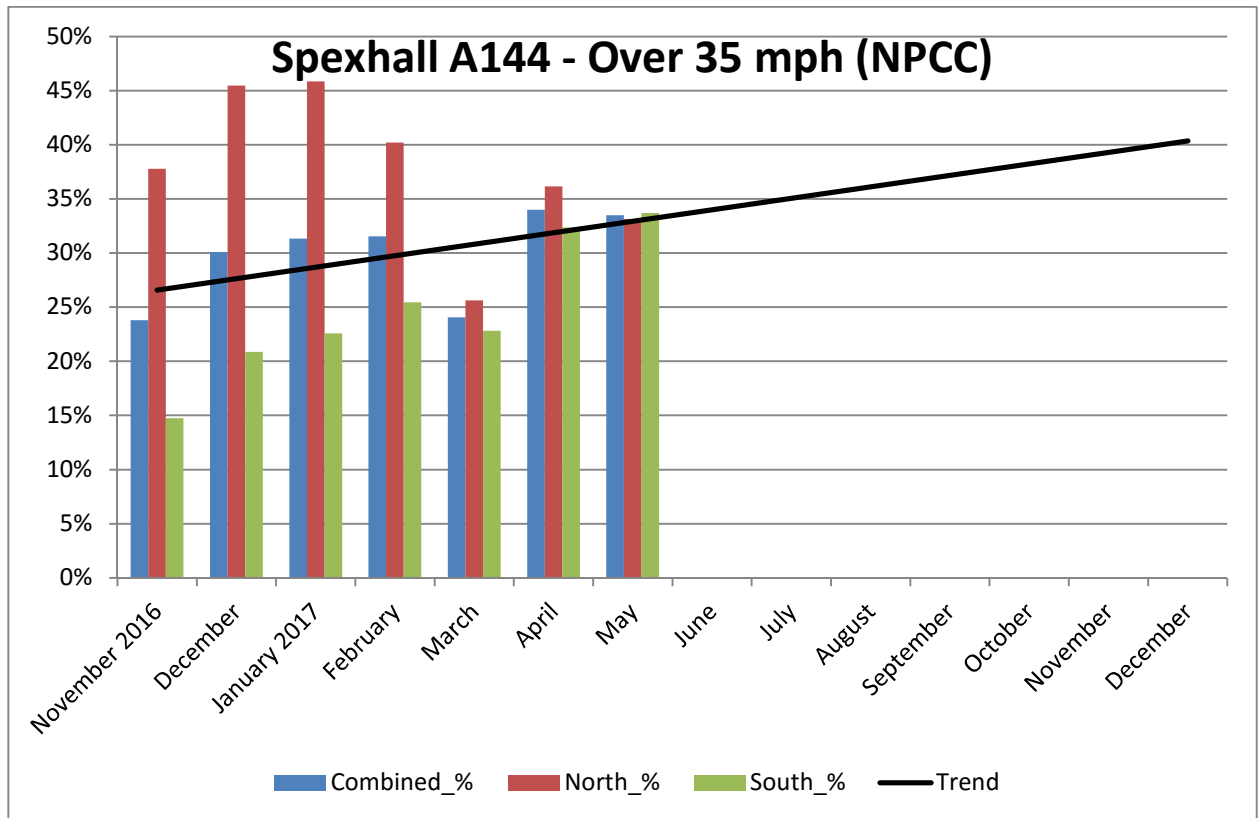
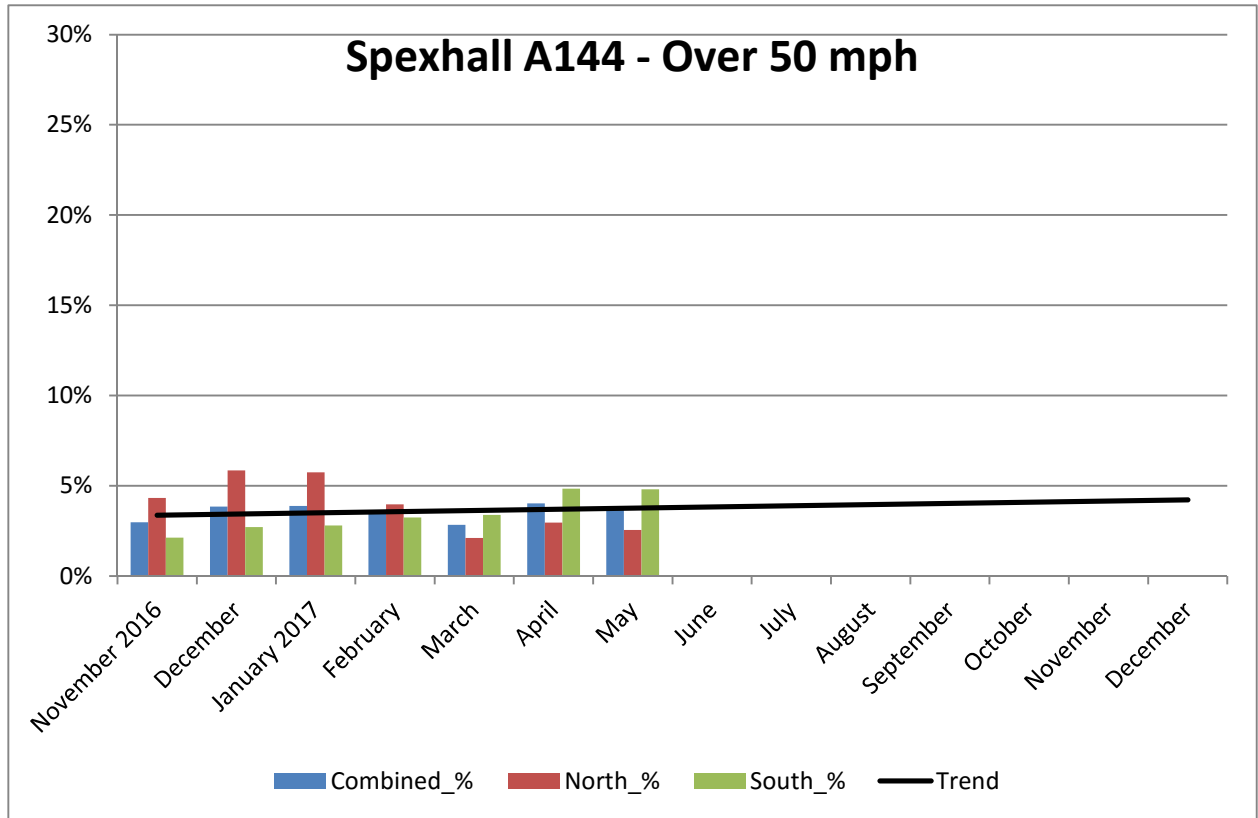
COMMUNITY SPEED WATCH

MAY 2017	A144 Spexhall, Stone Street		
	Combined	Northbound	Southbound
Vehicles per Day (average) - Weekday	5383	2371	3012
Vehicles per Day (average) - Weekend	3495	1577	1918
85 th Percentile Speed	40	37	40
% Vehicles Over 50 mph	3.8	2.6	4.8
% Vehicles At or Over NPCC ¹ (35 mph)	33.5	33.1	33.7
% Over Speed Limit (30mph)	69.3	73.1	66.3

Recommended Periods for Speed Enforcement	35 and Over	Northbound	Southbound
Based on highest number of offending drivers each hour Average number of offending drivers for the month was 1601 (33.5%) PER DAY	Mondays	4 to 5pm	8 to 9am
	Tuesdays	4 to 5pm	7 to 8am
	Wednesdays	4 to 5pm	7 to 8am
	Thursdays	4 to 5pm	4 to 5pm
	Fridays	3 to 4pm	7 to 8am
	Saturdays	12 to 1pm	10 to 11am
	Sundays	12 to 1pm	11 to Noon

¹ NPCC - National Police Chiefs Council (previously ACPO - Association of Chief Police Officers)

COMMUNITY SPEED WATCH



COMMUNITY SPEED WATCH

